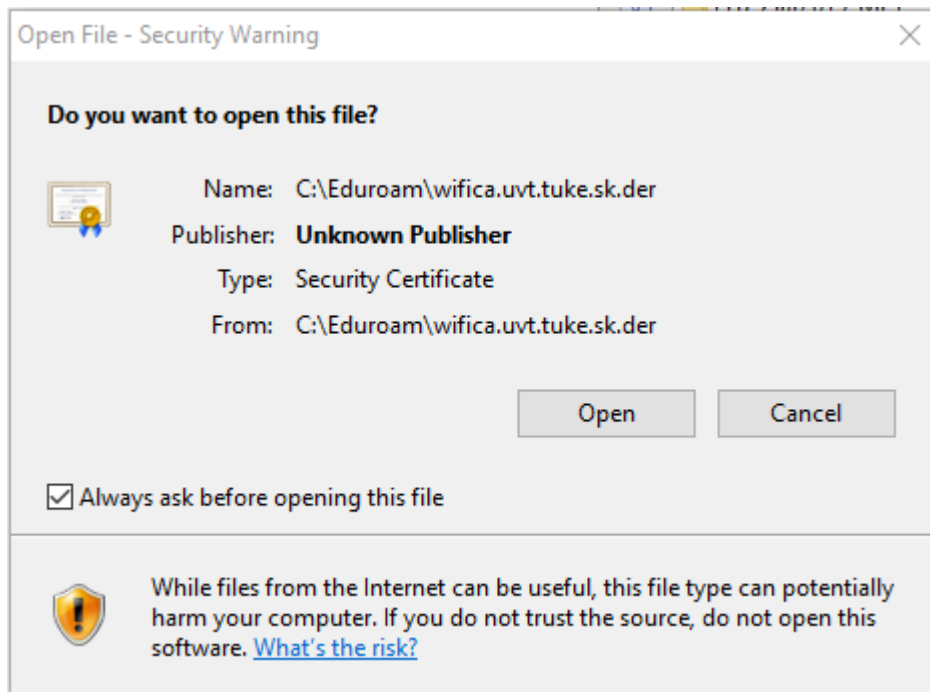


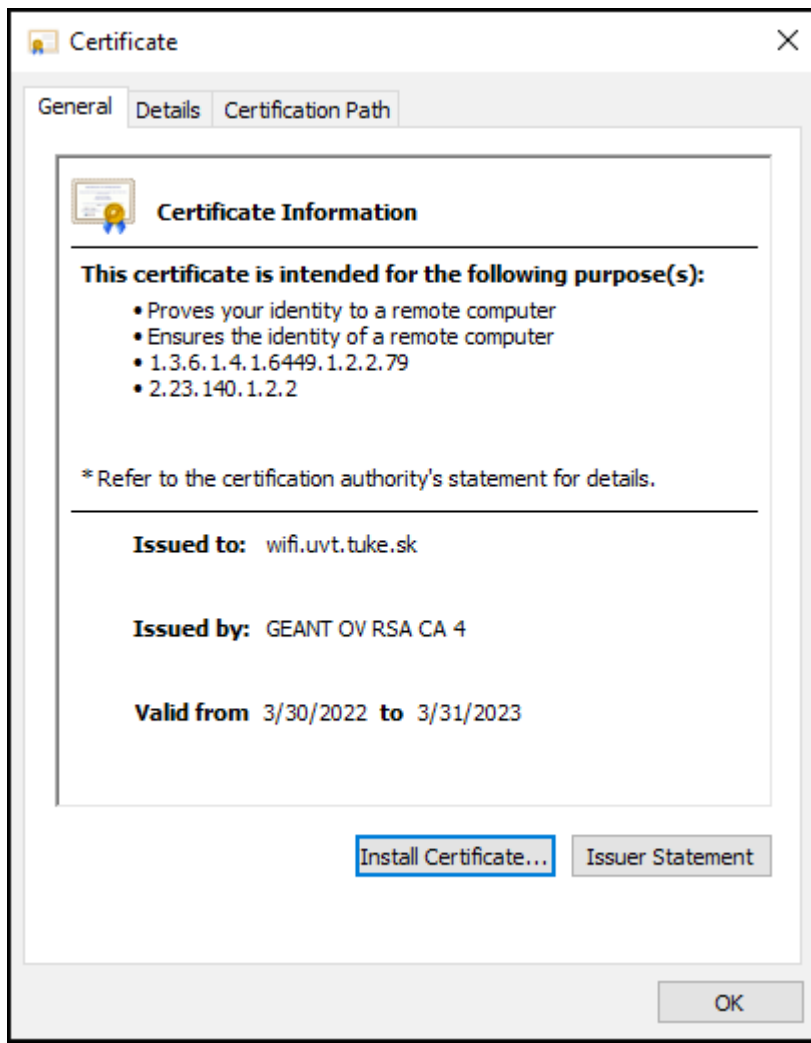
## Manual Configuration of the eduroam Wireless Network in Windows 11/10/8.1/8/7 OS

**Warning:** Use this tutorial only if the configuration using the automatic eduroam CAT application does not work due to older versions of Win OS.

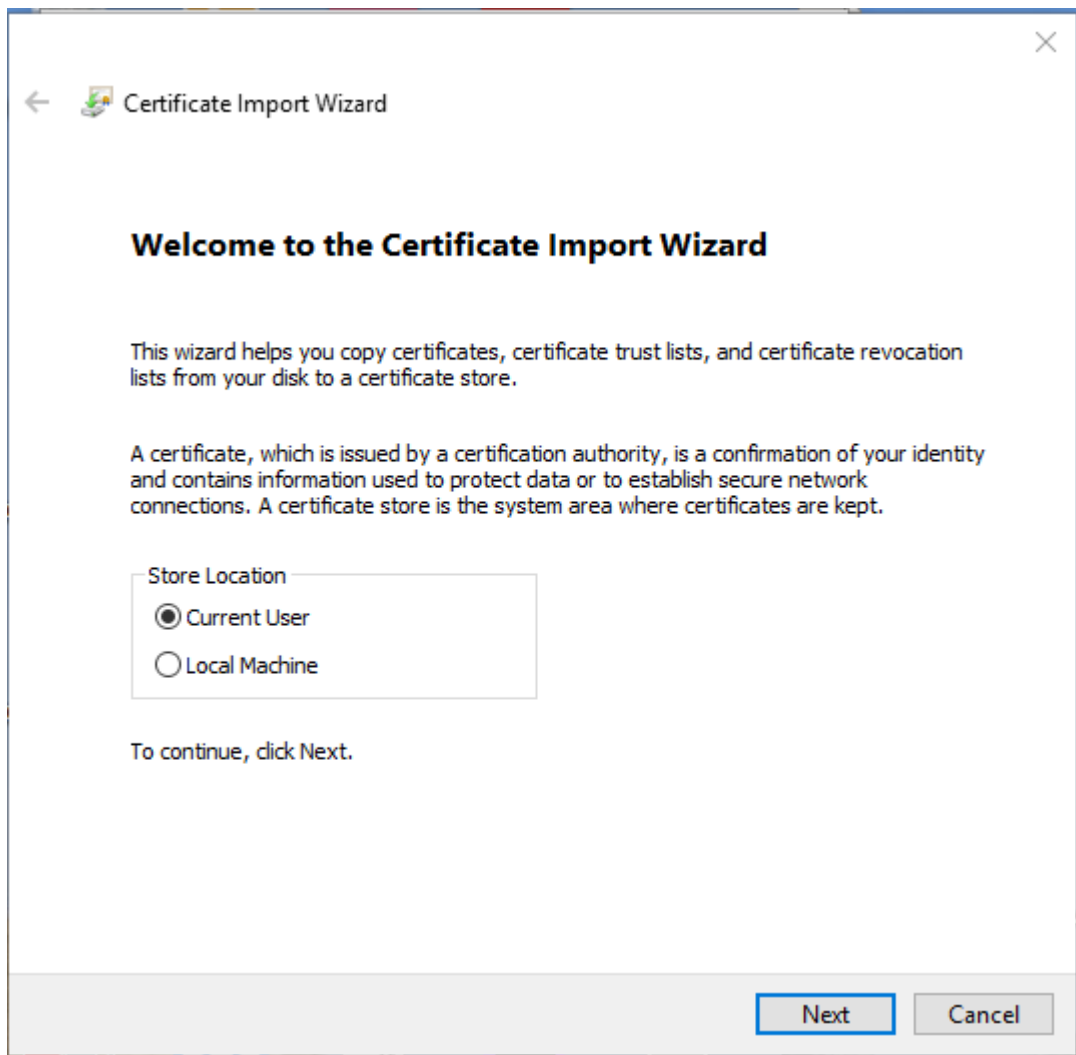
1. Connect to the TUNET-guest wireless network.
2. Download the wifica.uvt.tuke.sk digital certificate (der format) for the eduroam network from the following page:  
<https://uvt.tuke.sk/wps/portal/uv/sluzby/bezdrotove-siete-wifi-na-tuke/prirucka-pouzivatela-bezdrotovej-siete-eduroam>
3. Double-click to start the certificate installation and click **Open**.

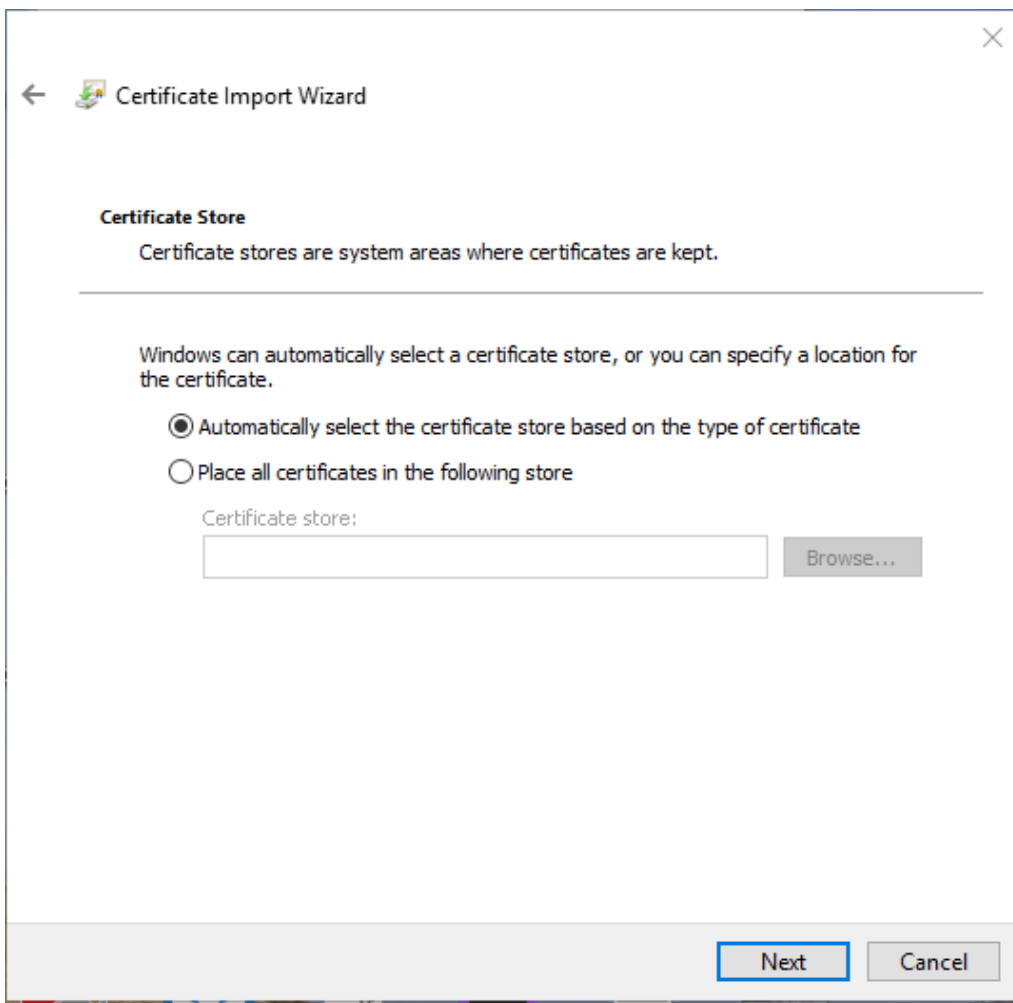


#### 4. Install Certificate and OK.

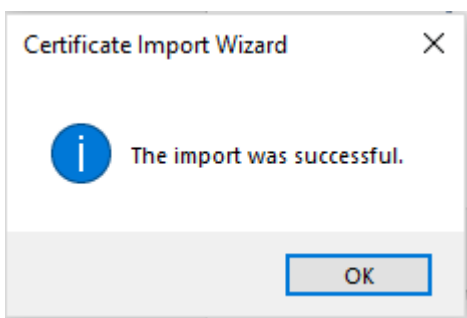
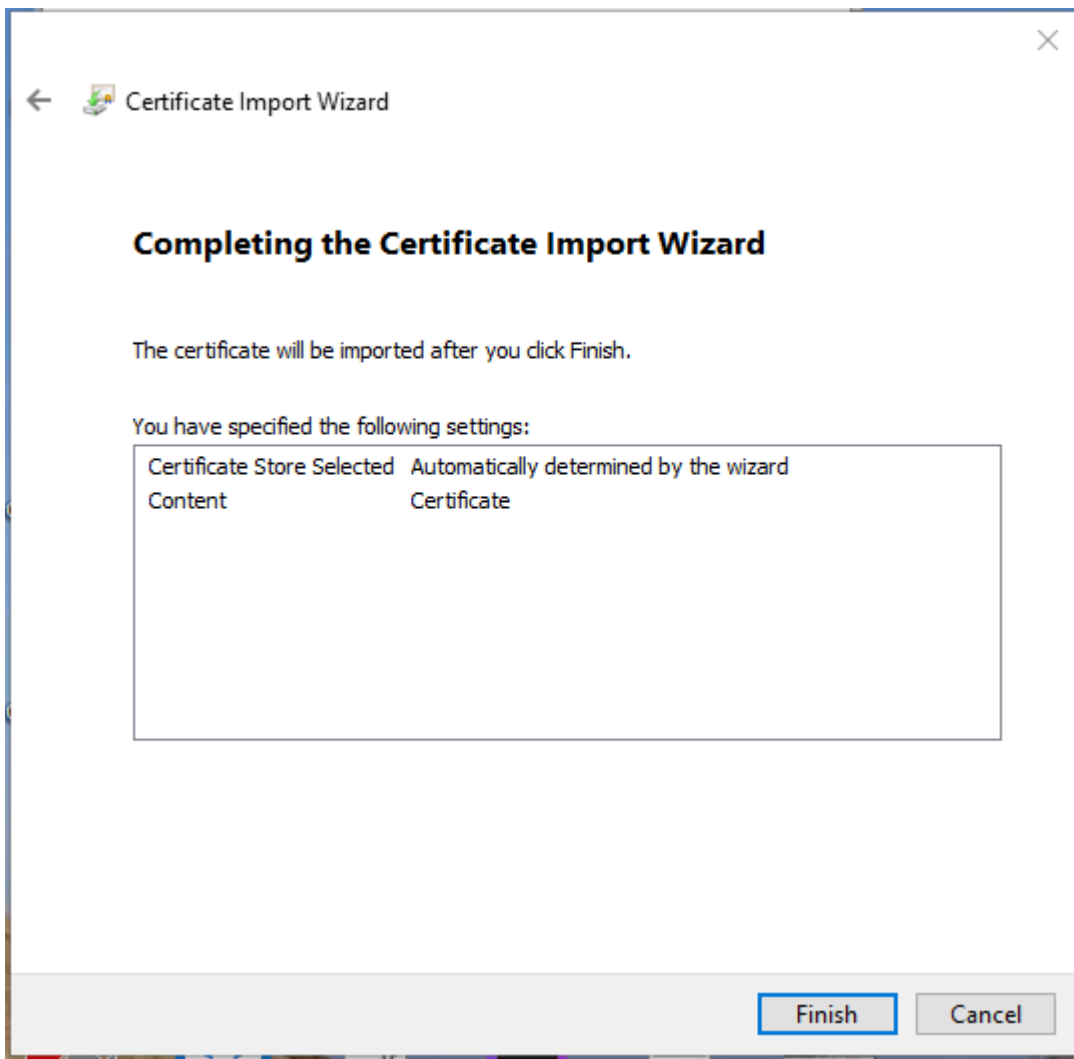


5. And continue by clicking **Next** and **Next** again.



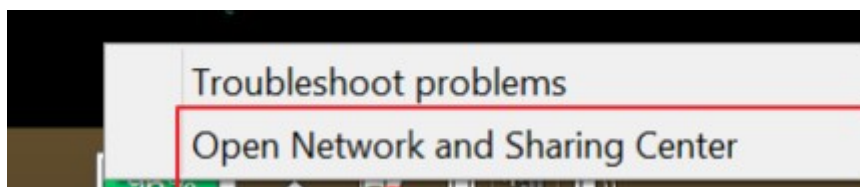


6. Click **Finish**.

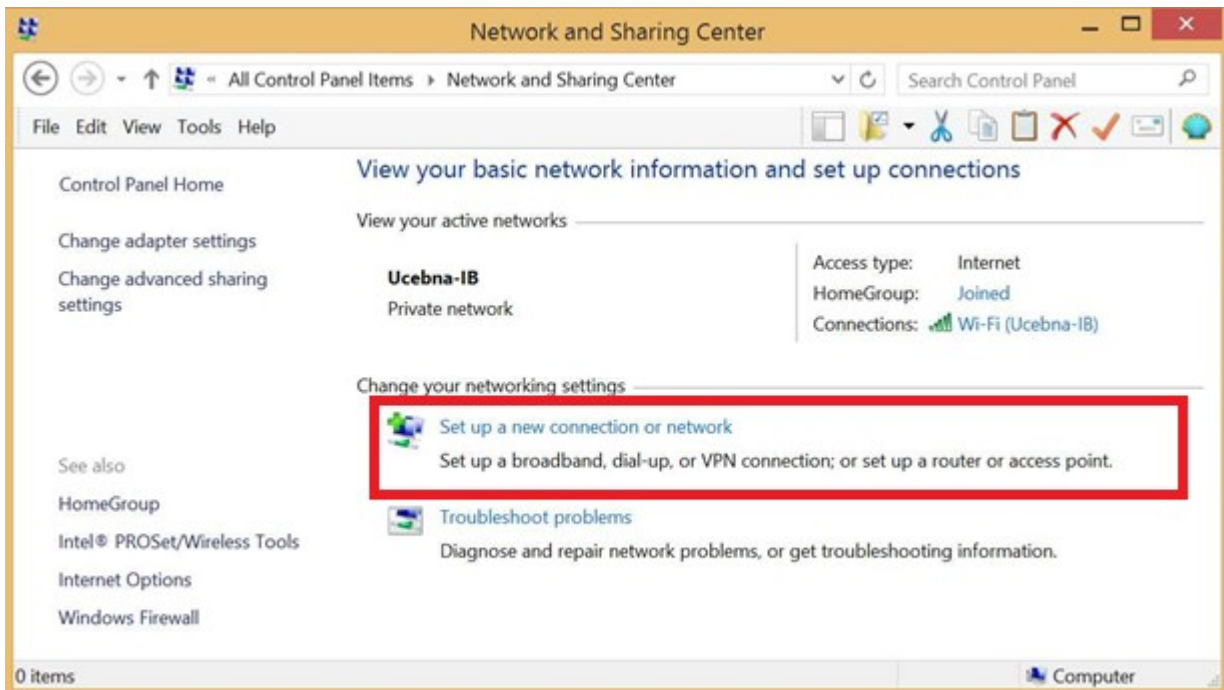


The certificate import was successful.

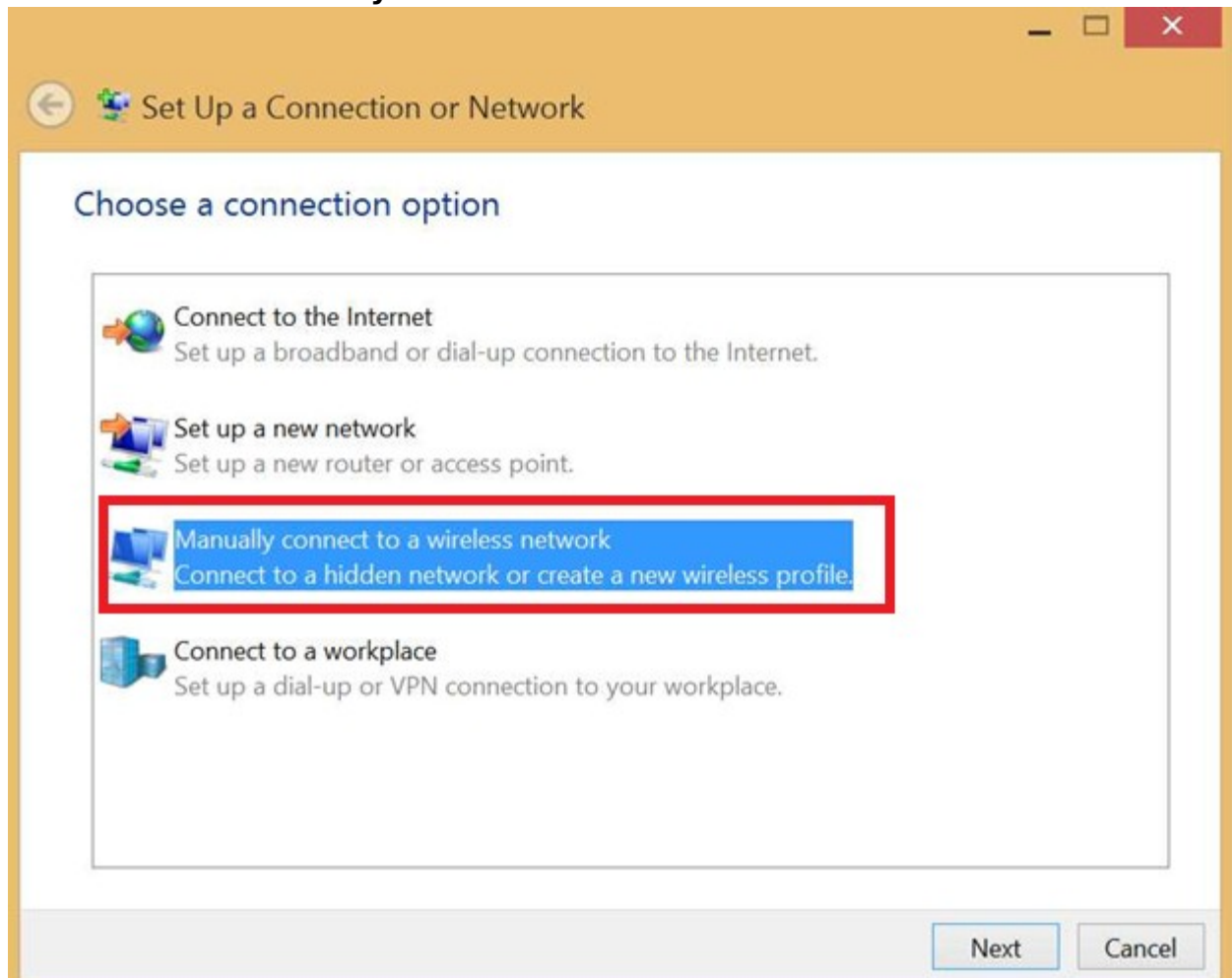
7. Right-click the network icon on the taskbar in the default desktop setting in the lower right corner and select **Open Network and Sharing Center**.



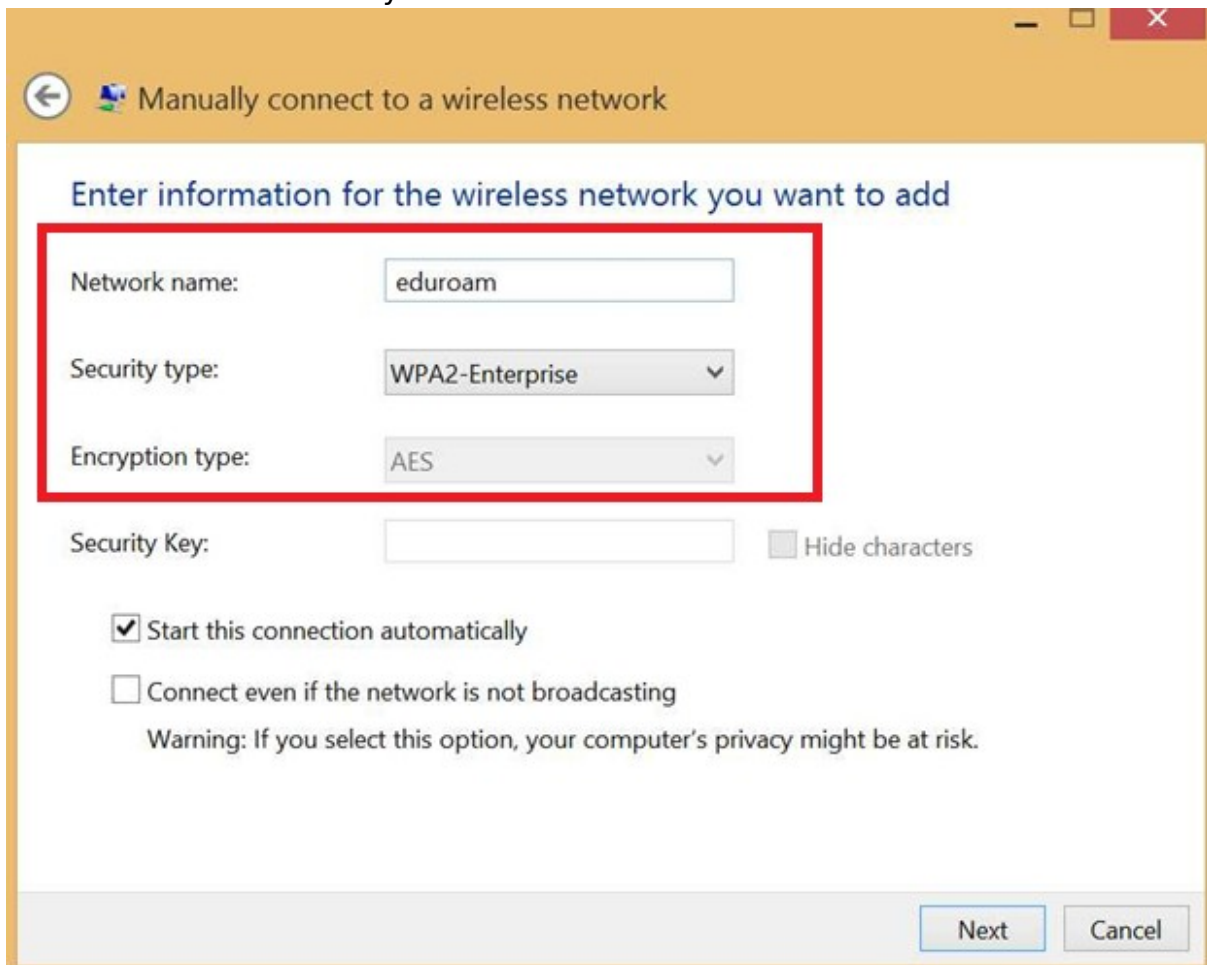
8. Use the **Set up a new connection or network** option.



9. Continue with **Manually connect to a wireless network** and click **Next**.



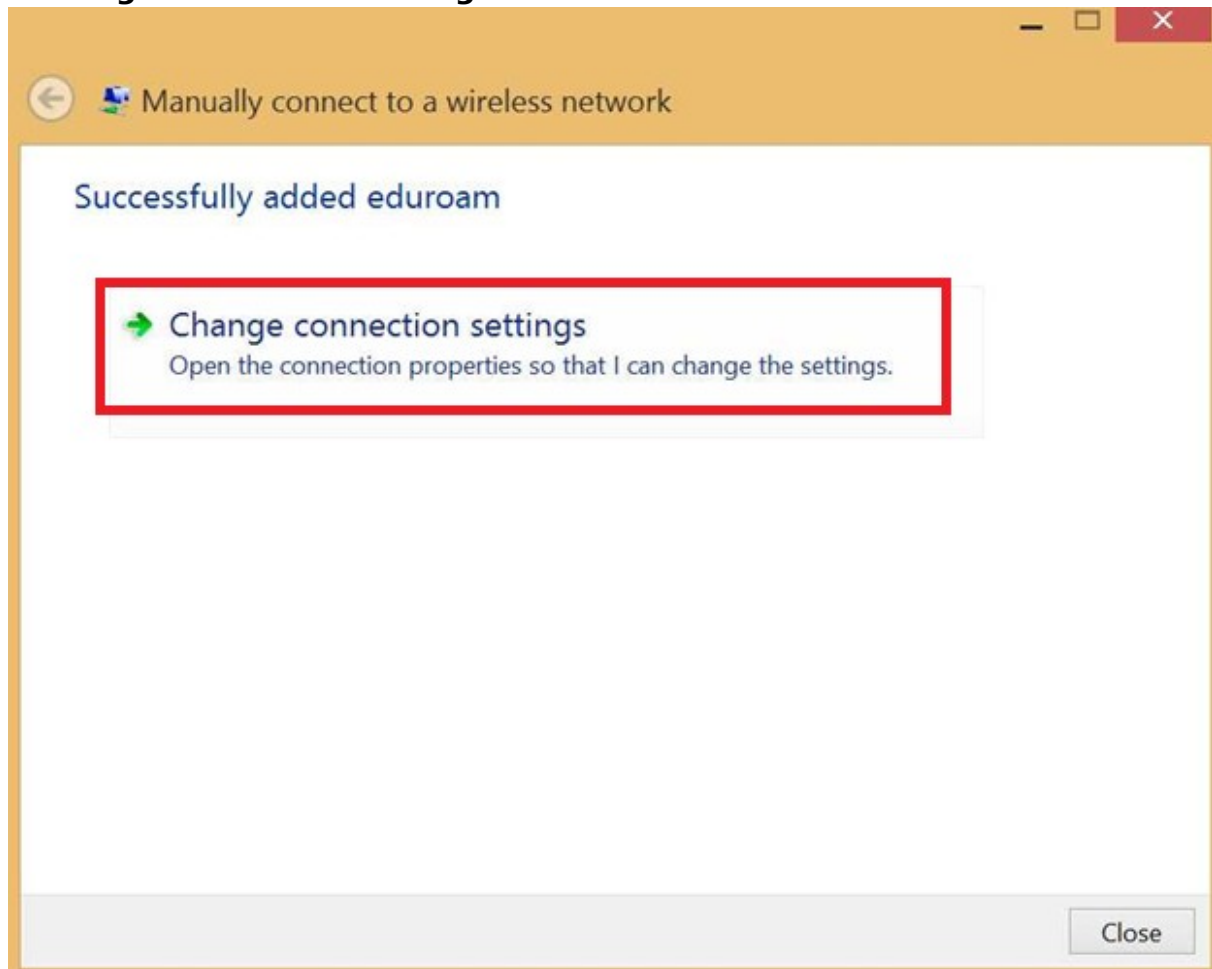
10. Set the network security and click **Next**.



The screenshot shows a Windows network setup window titled "Manually connect to a wireless network". The window has a blue header bar with a back arrow icon and the title. Below the header, the main content area is white and contains the following elements:

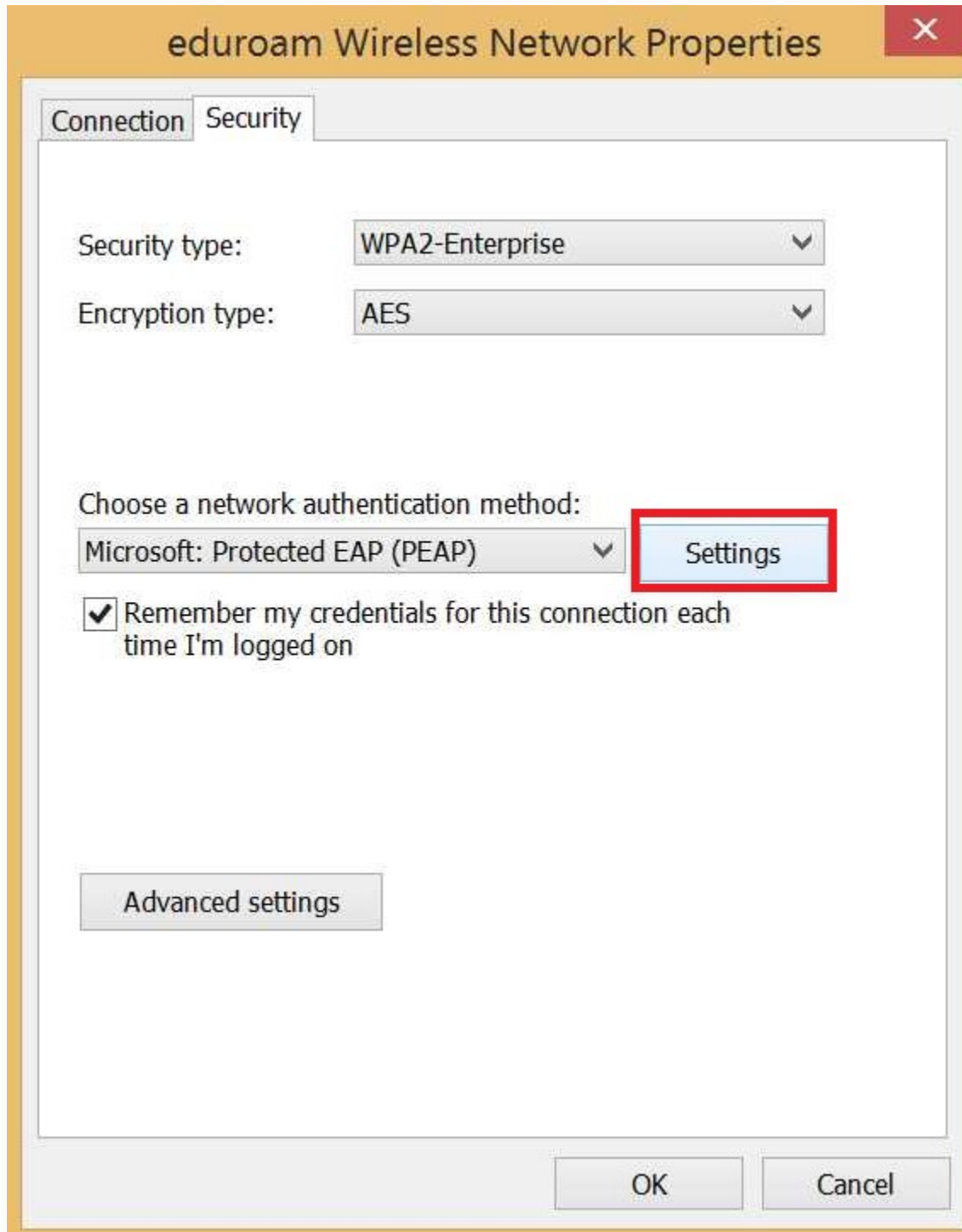
- A blue heading: "Enter information for the wireless network you want to add".
- A red rectangular box highlights the following fields:
  - "Network name:" with a text input field containing "eduroam".
  - "Security type:" with a dropdown menu showing "WPA2-Enterprise".
  - "Encryption type:" with a dropdown menu showing "AES".
- "Security Key:" with a text input field and a "Hide characters" checkbox.
- Two checkboxes:
  - "Start this connection automatically"
  - "Connect even if the network is not broadcasting"
- A warning message: "Warning: If you select this option, your computer's privacy might be at risk."
- At the bottom right, there are two buttons: "Next" (highlighted in blue) and "Cancel".

11. The network is added. You still need to add the eduroam network certificate. Click **Change connection settings**.

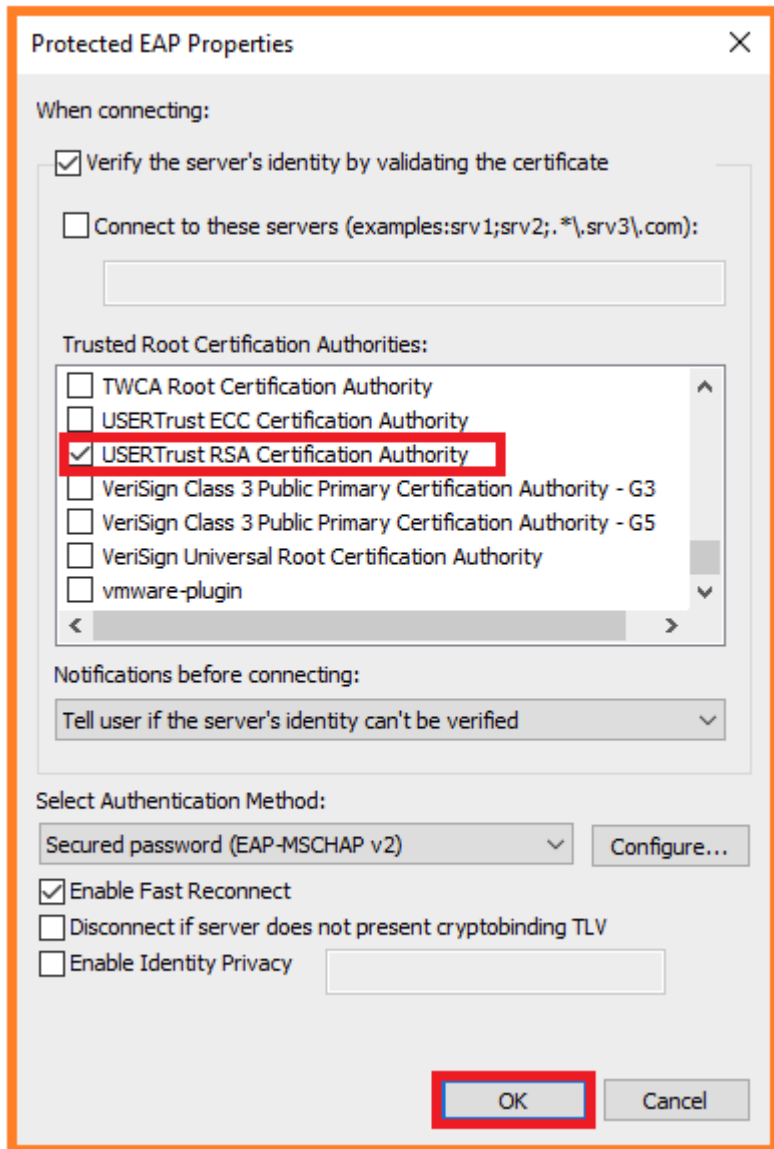




12. A window will appear in which you click the PEAP protocol setting, **Settings**.

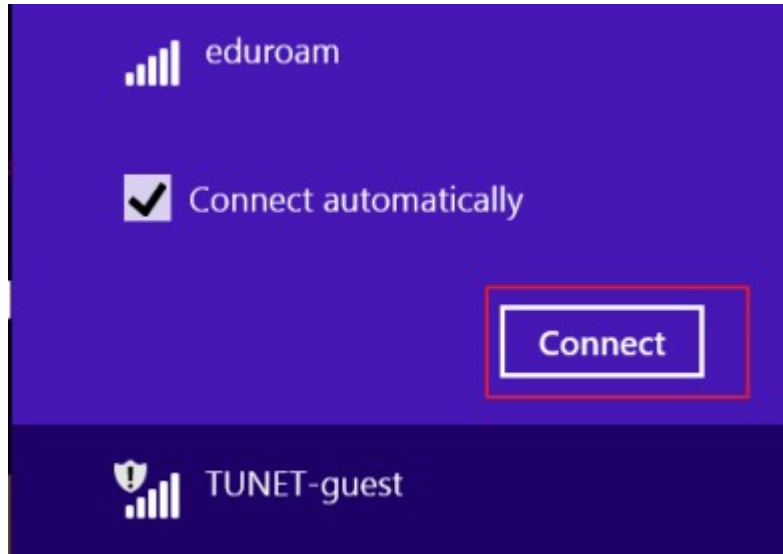


13. Select the appropriate certificate for eduroam and click **OK** twice in a row.



The eduroam network is set up.

14. Log in to the eduroam network.



15. Enter your login data; unique login and @tuke.sk suffix in the form **xy123ab@tuke.sk** and WiFi password that you previously set on the page: <https://uvt.tuke.sk/wps/portal/uv/sluzby/bezdrotove-siete-wifi-na-tuke/nastavenie-hesla-pre-wifi-pristup>

After successfully verifying your login data, you have connected to the eduroam network.

