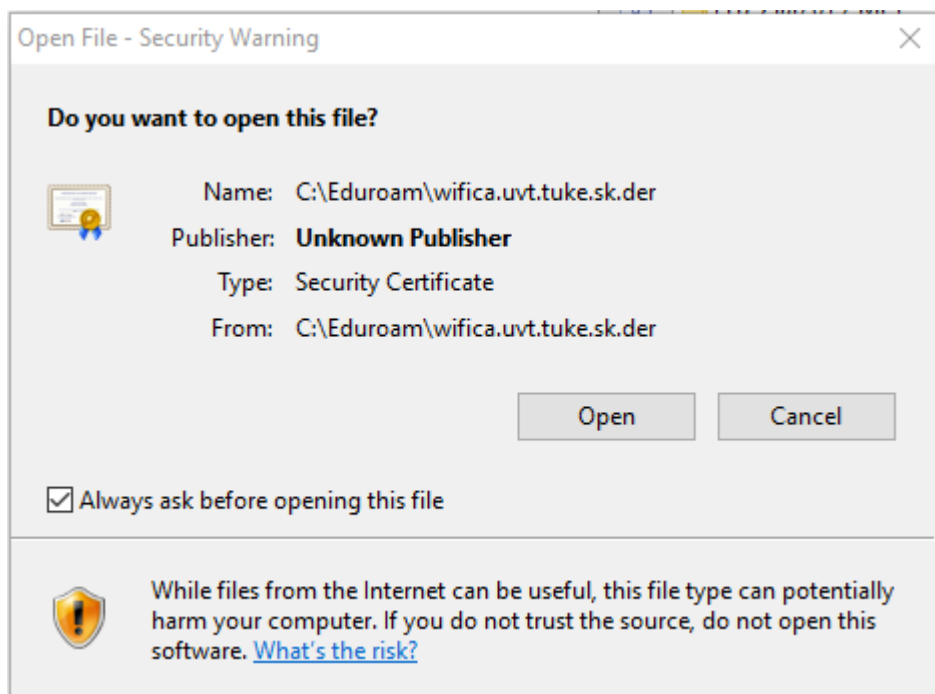


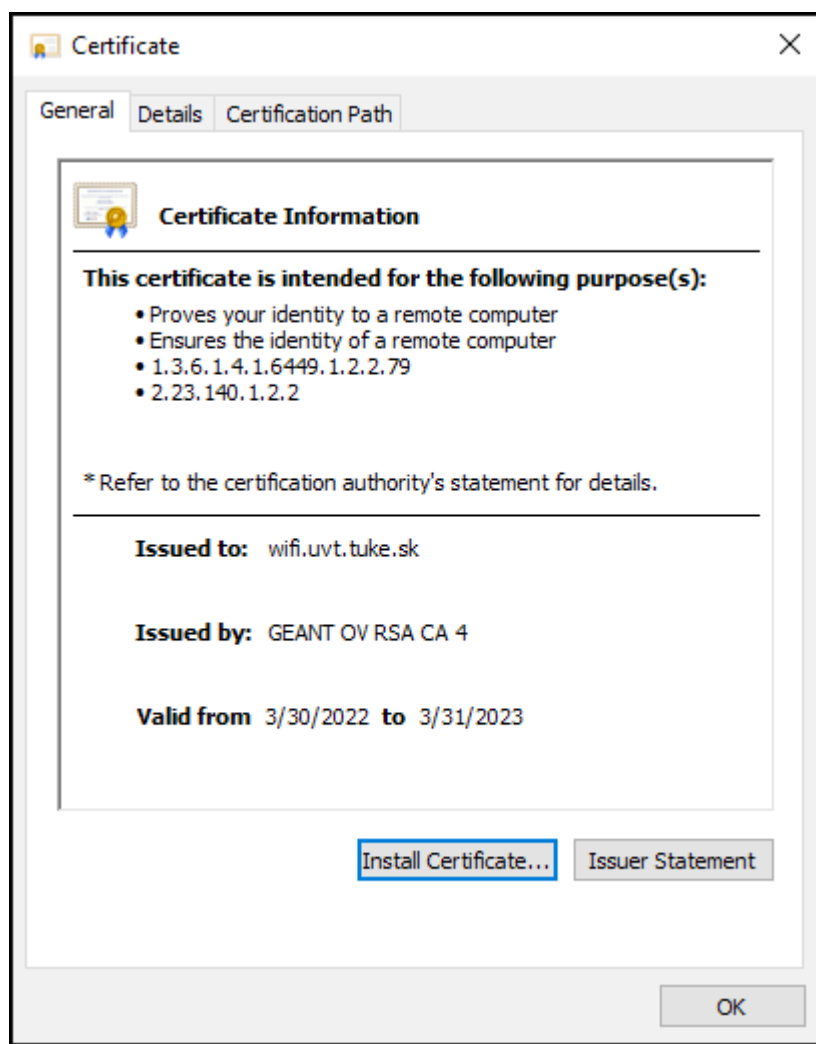
## Manuálna konfigurácia bezdrôtovej siete eduroam v OS WINDOWS 11/10/8.1/8/7

**Upozornenie:** Tento postup použite iba ak nefunguje konfigurácia pomocou automatickej aplikácie CAT eduroam z dôvodu starších verzií OS WIN.

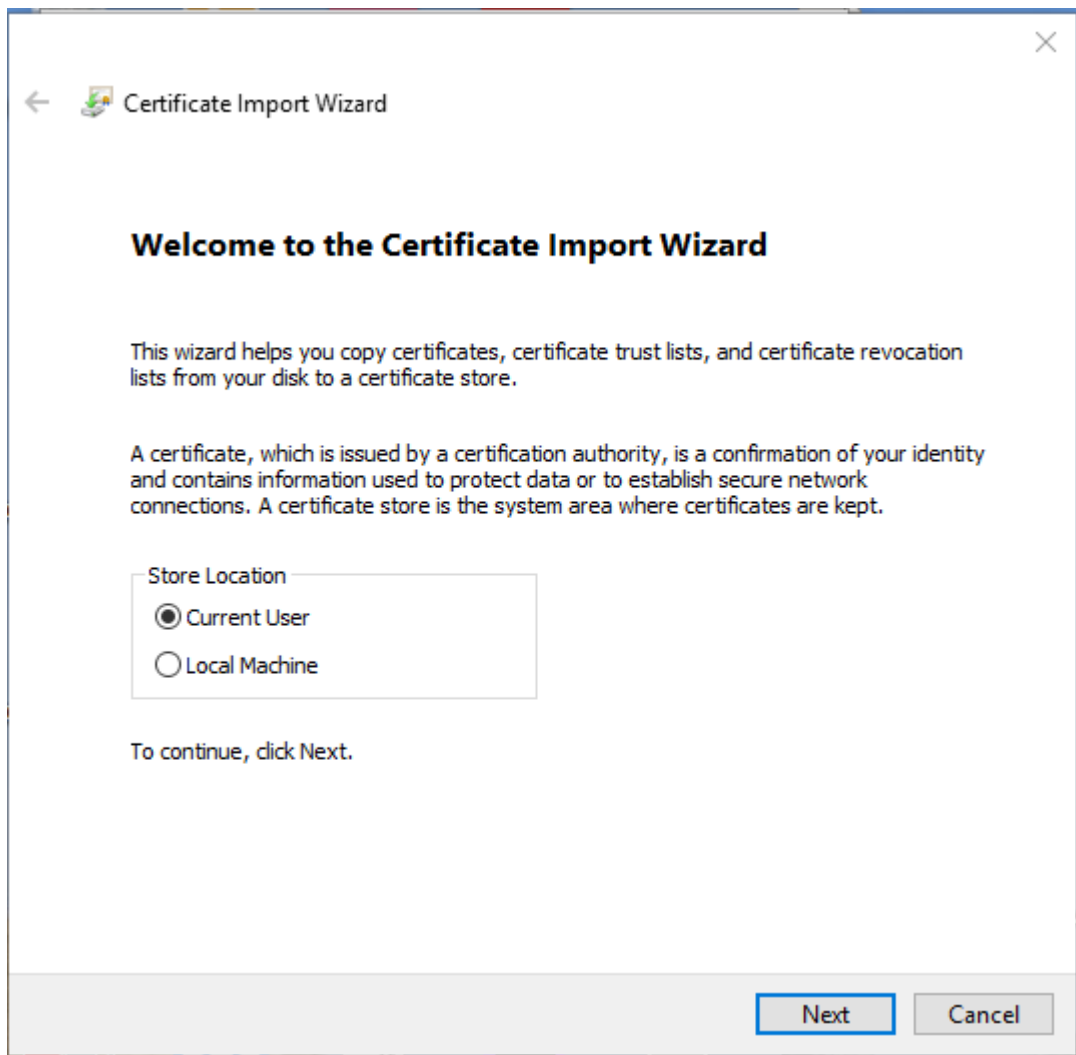
1. Pripojte sa na bezdrôtovú sieť TUNET-guest.
2. Stiahnite si digitálny certifikát wifica.uvt.tuke.sk /der formát/ pre sieť eduroam zo stránky: <https://uvt.tuke.sk/wps/portal/uv/sluzby/bezdrotove-siete-wifi-na-tuke/prirucka-pouzivatela-bezdrotovej-siete-eduroam>
3. Dvojitým klikom spustíte inštaláciu certifikátu a kliknite na **Open**.

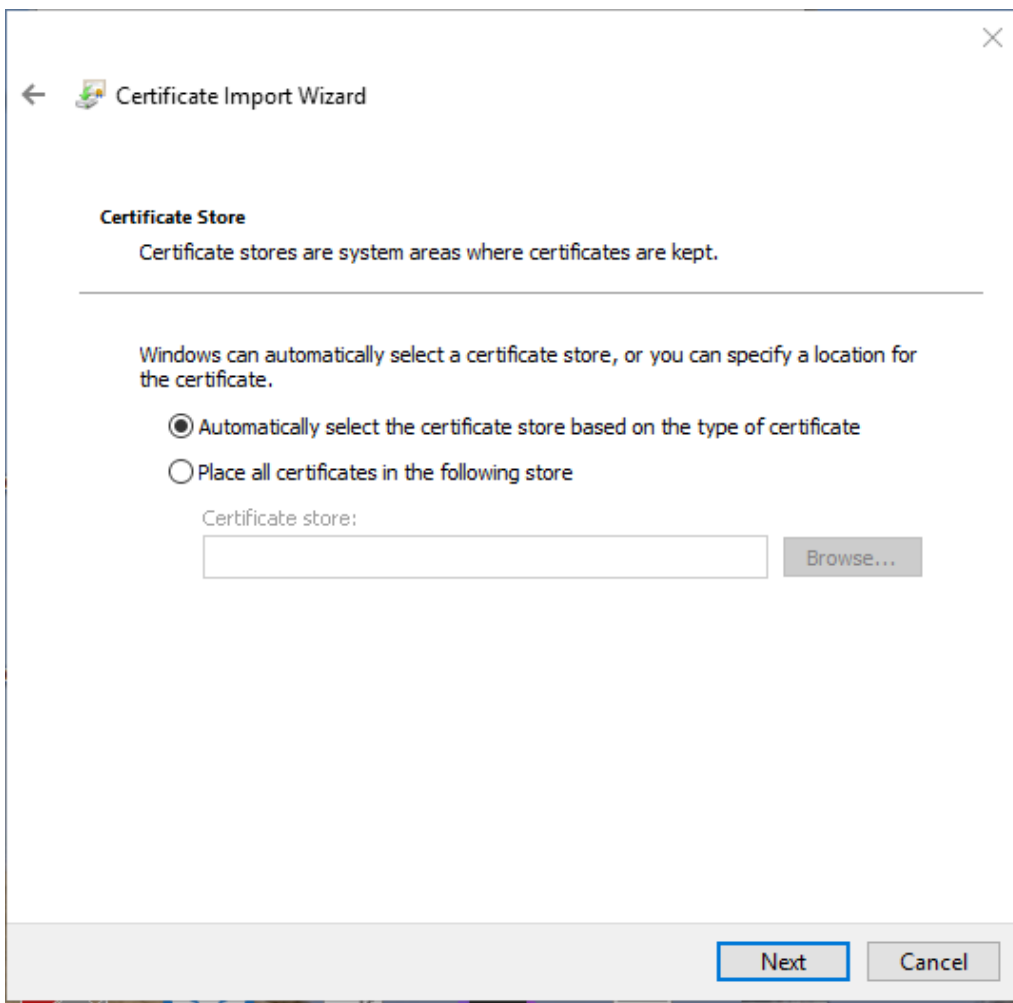


#### 4. Install Certificate a OK.

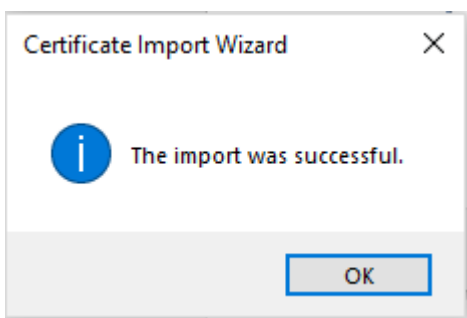
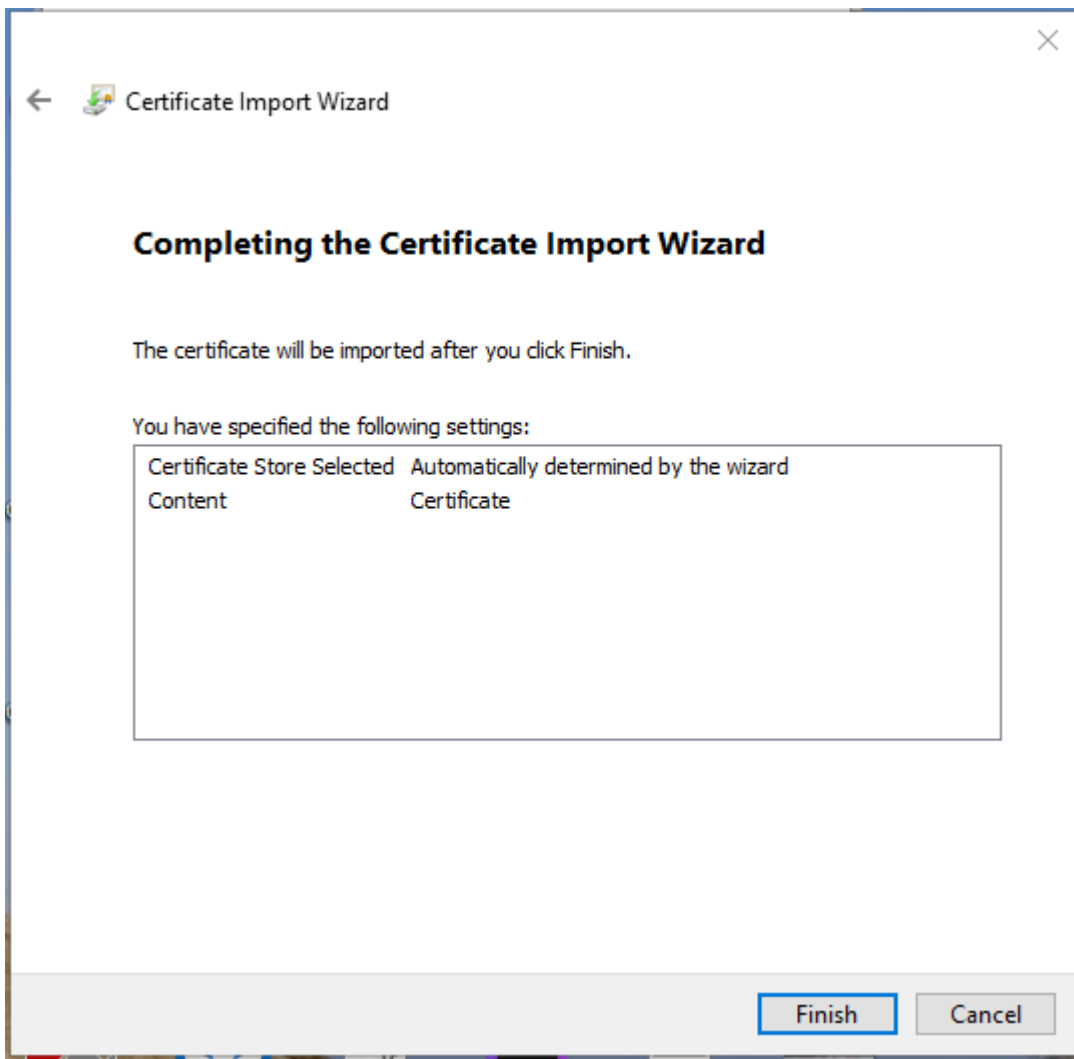


5. A pokračujete kliknutím na **Next** a ďalšie **Next**.



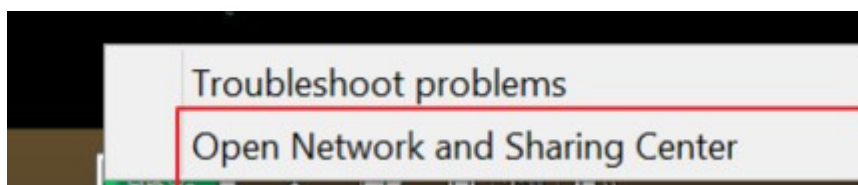


6. Kliknite na **Finish**.

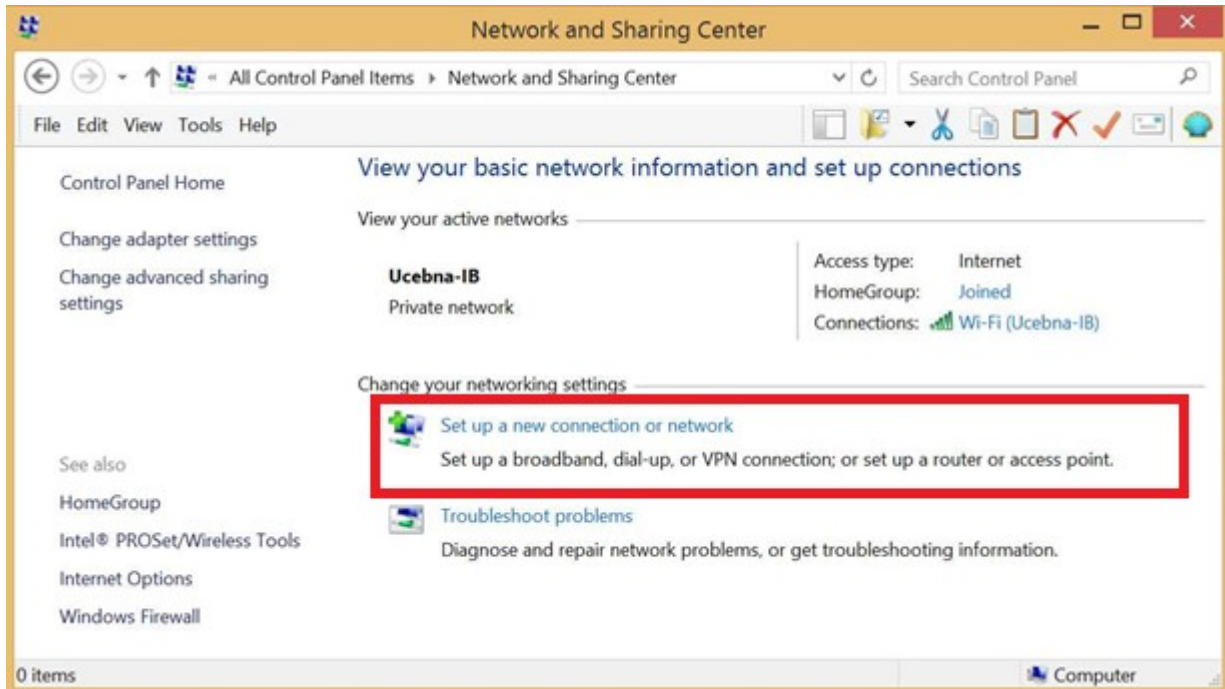


Import certifikátu bol úspešný.

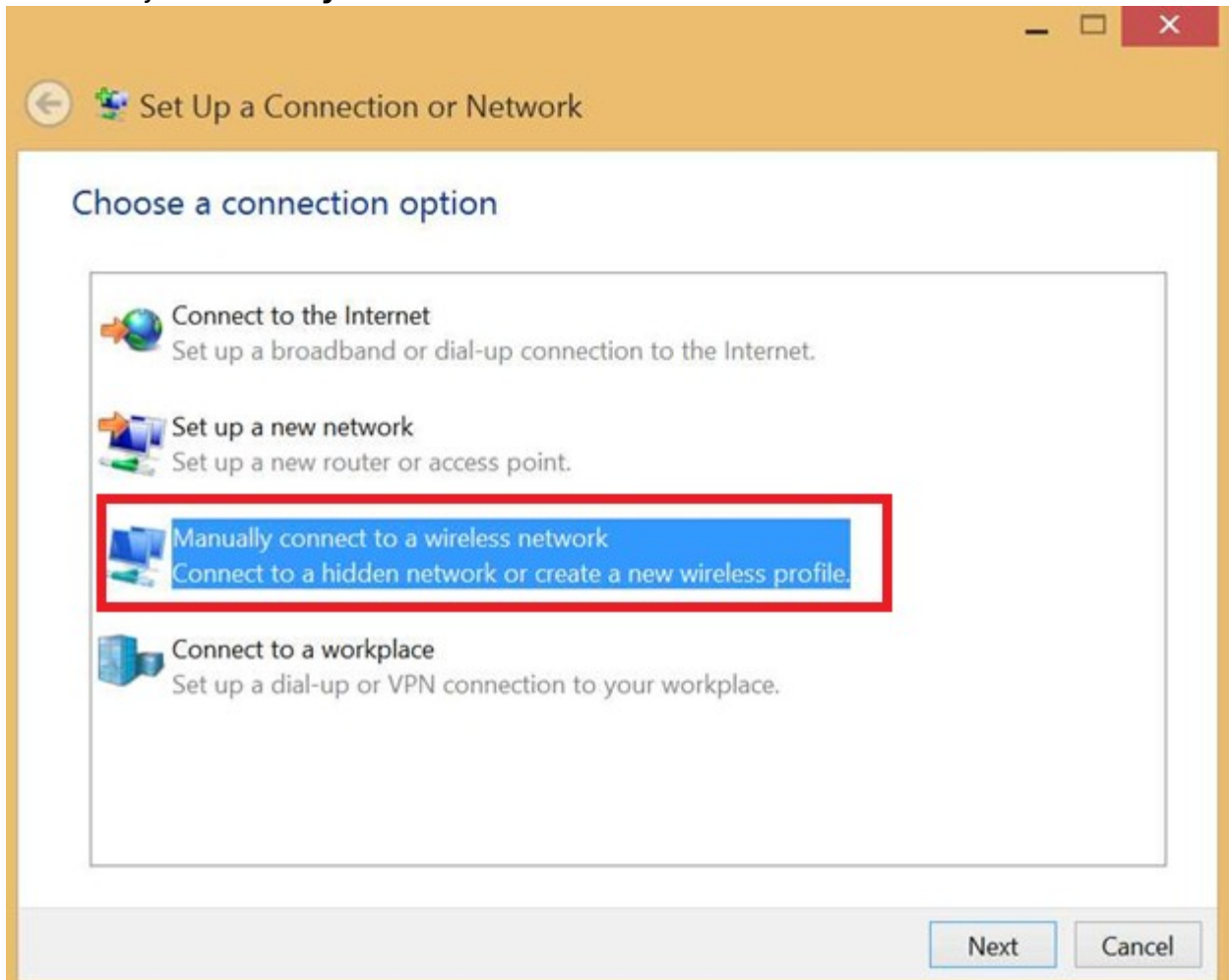
7. Kliknite pravým tlačidlom myši na ikonu pre bezdrôtové pripojenie na paneli úloh pri štandardnom nastavení pracovnej plochy v pravom dolnom rohu a otvorte **Open Network and Sharing Center**.



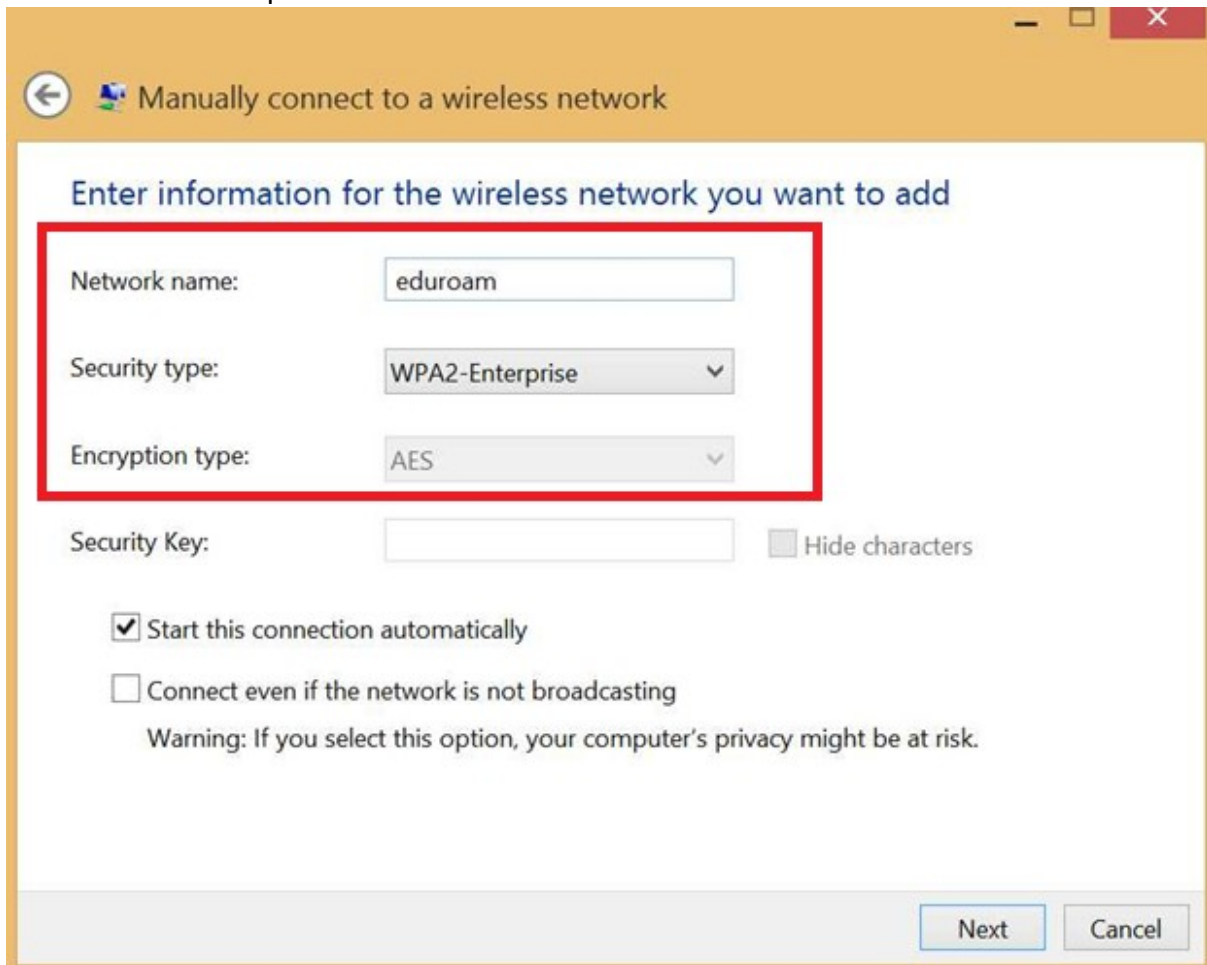
8. Použijte volbu **Set up a new connection or network**.



9. Pokračujte **Manually connect to a wireless network** a klikněte na **Next**.



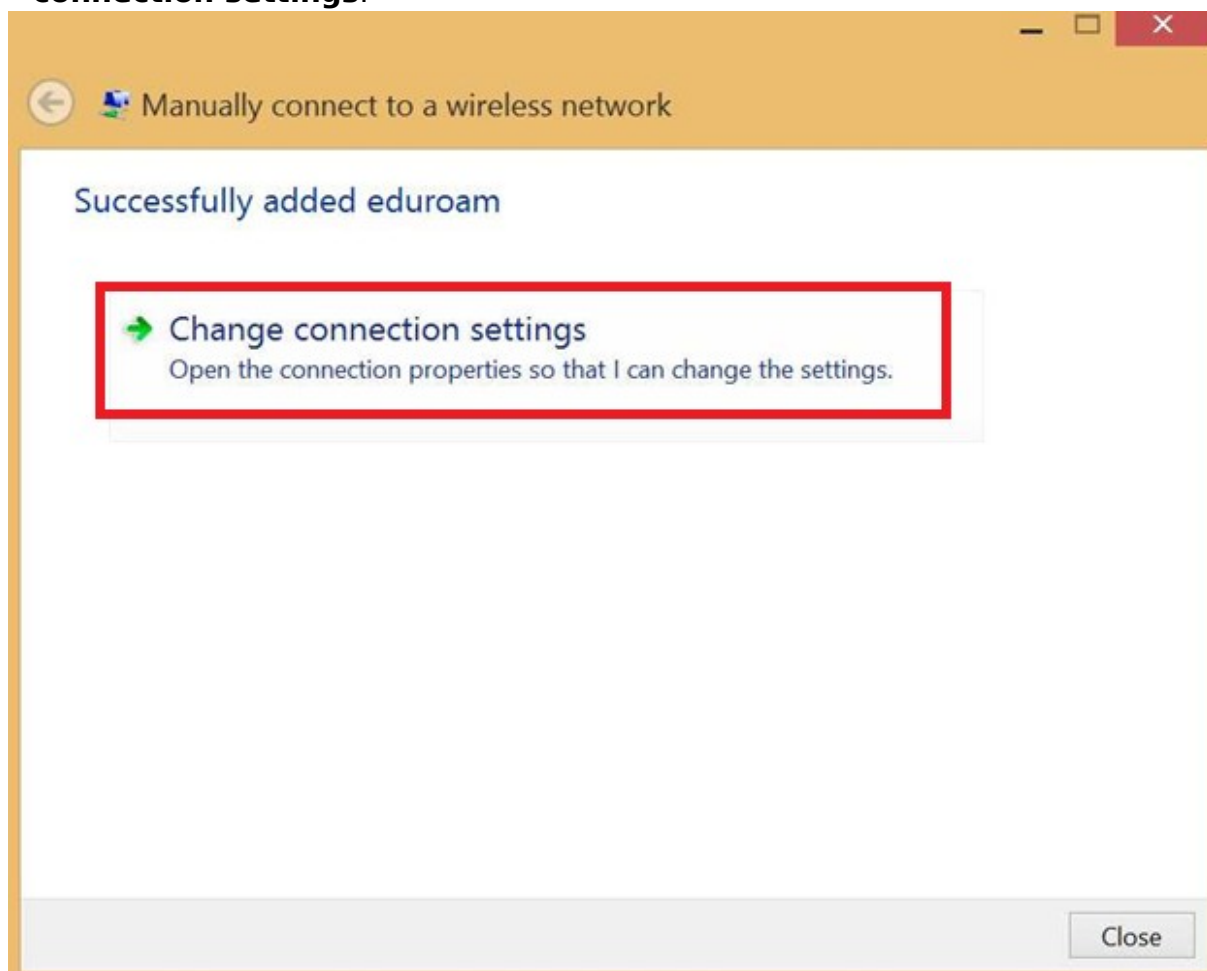
10. Nastavte zabezpečenie siete a kliknite na **Next**.



The image shows a Windows network setup wizard window titled "Manually connect to a wireless network". The window has a light orange header bar with a back arrow icon and a close button. Below the header, the main content area is white and contains the following elements:

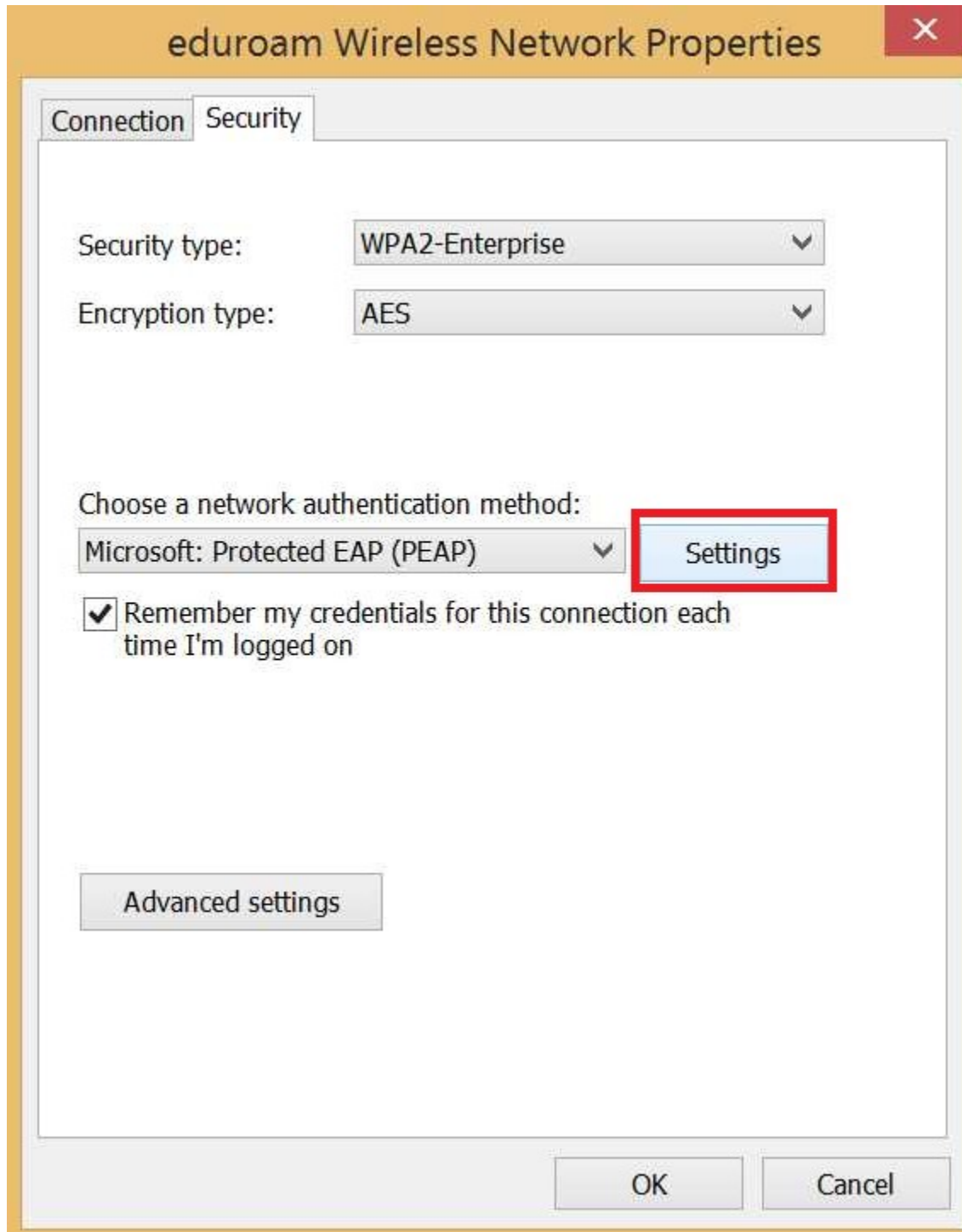
- A blue heading: "Enter information for the wireless network you want to add".
- A red rectangular box highlighting the following fields:
  - "Network name:" with a text input field containing "eduroam".
  - "Security type:" with a dropdown menu showing "WPA2-Enterprise".
  - "Encryption type:" with a dropdown menu showing "AES".
- "Security Key:" with an empty text input field and a "Hide characters" checkbox.
- Two checkboxes:
  - "Start this connection automatically"
  - "Connect even if the network is not broadcasting"
- A warning message: "Warning: If you select this option, your computer's privacy might be at risk." (referring to the second checkbox).
- At the bottom right, there are two buttons: "Next" and "Cancel".

11. Sieť je pridaná. Potrebujete ešte pridať certifikát siete eduroam. Kliknite na **Change connection settings**.

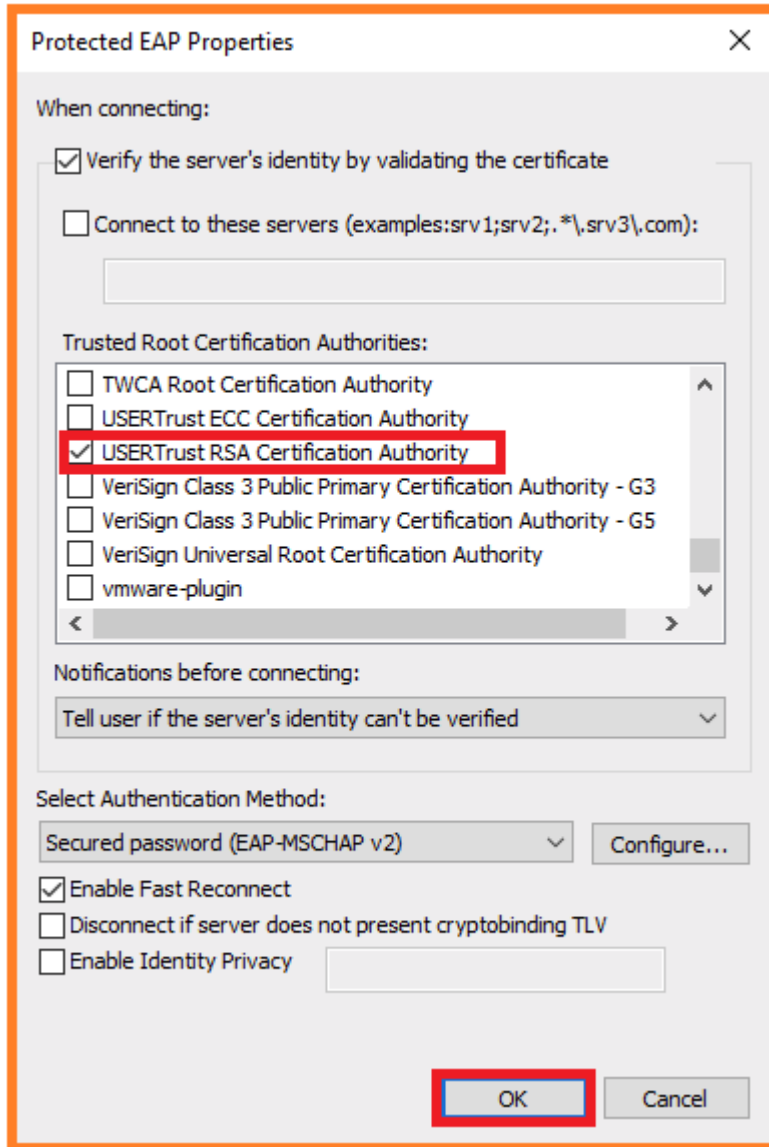




12. Objaví sa okno, v ktorom kliknite na nastavenie protokolu PEAP, **Settings**.

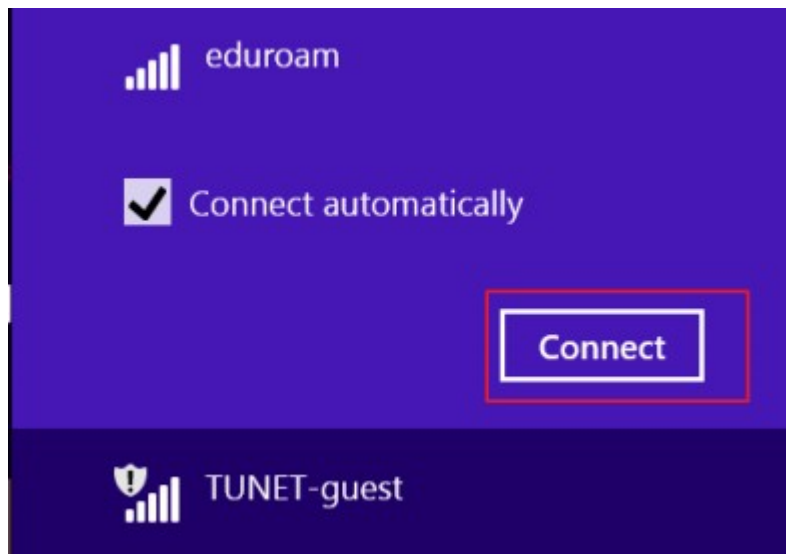


13. Vyberte príslušný certifikát pre eduroam a kliknite 2x za sebou **OK**.



Sieť eduroam je nastavená.

14. Prihláste sa do siete eduroam.



15. Zadajte svoje prihlasovacie údaje; jedinečný login a sufix @tuke.sk v tvare **xy123ab@tuke.sk** a WiFi heslo, ktoré ste si predtým nastavili na stránke: <https://uvt.tuke.sk/wps/portal/uv/sluzby/bezdrotove-siete-wifi-na-tuke/nastavenie-hesla-pre-wifi-pristup>

Po úspešnom overení Vašich prihlasovacích údajov ste sa pripojili do siete eduroam.

