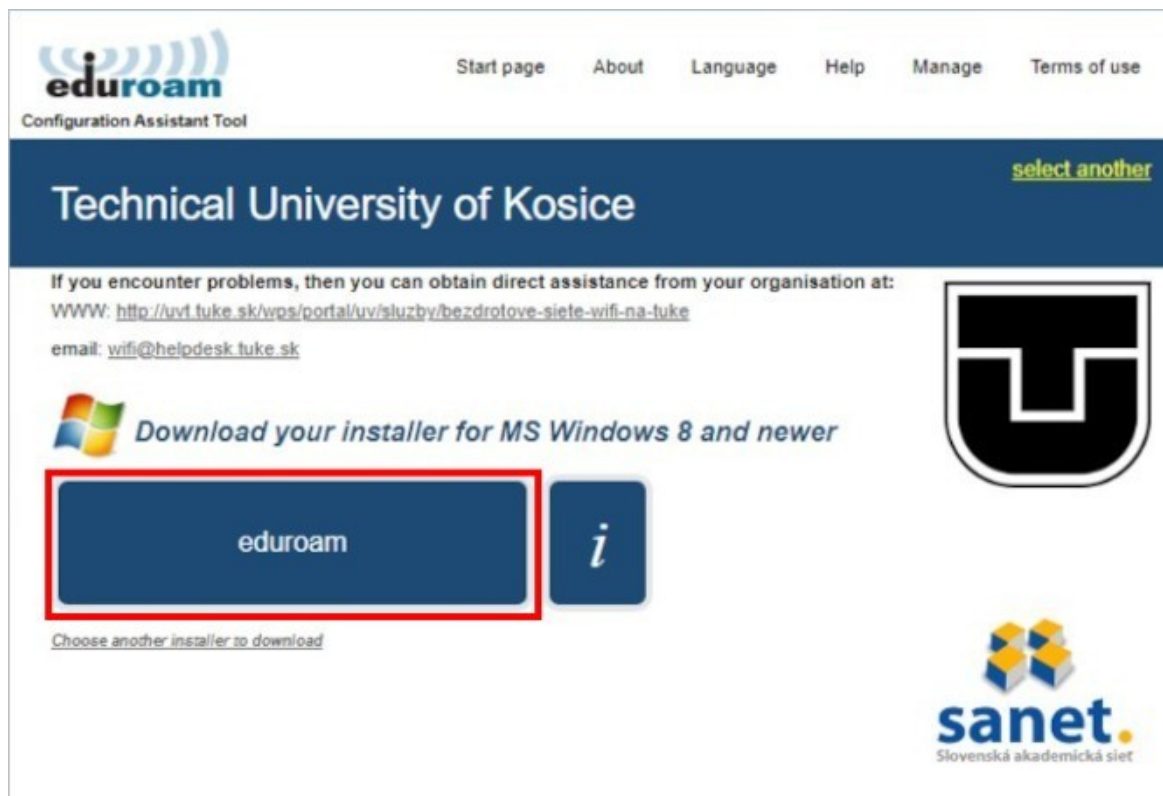


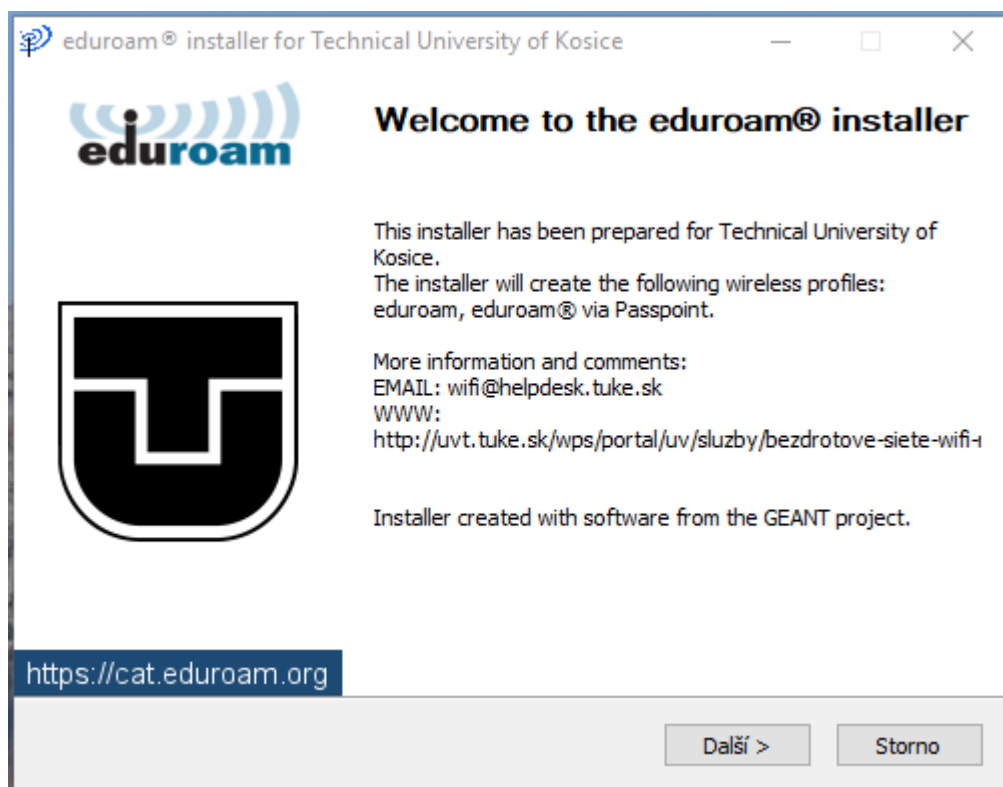
Configuring the eduroam Wireless Network in Win 10/8.1/8 OS Using the Automatic eduroam CAT Application

1. PConnect to the TUNET-guest wireless network.
2. Download the eduroam CAT installer: <https://cat.eduroam.org/?idp=996>

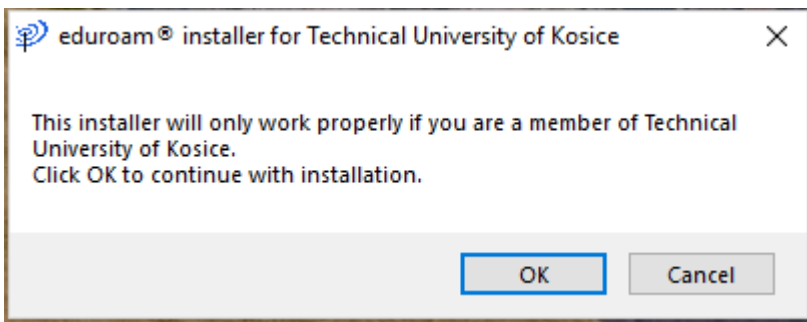


The screenshot shows the eduroam Configuration Assistant Tool website. At the top, there is a navigation menu with links for "Start page", "About", "Language", "Help", "Manage", and "Terms of use". The main header features the eduroam logo and the text "Configuration Assistant Tool". Below this, a dark blue banner displays "Technical University of Kosice" with a "select another" link. A message provides contact information for technical assistance: "If you encounter problems, then you can obtain direct assistance from your organisation at: WWW: <http://uv.tuke.sk/wps/portal/uv/sluzby/bezdrotove-siete-wifi-na-tuke> email: wifi@helpdesk.tuke.sk". A Windows logo is followed by the text "Download your installer for MS Windows 8 and newer". A red box highlights a blue button labeled "eduroam" next to an information icon. Below the button is the text "Choose another installer to download". The TUKE logo and the sanet logo (Slovenská akademická sieť) are also visible.

3. Run the eduroam CAT installer and confirm that you are a member of the Technical University.



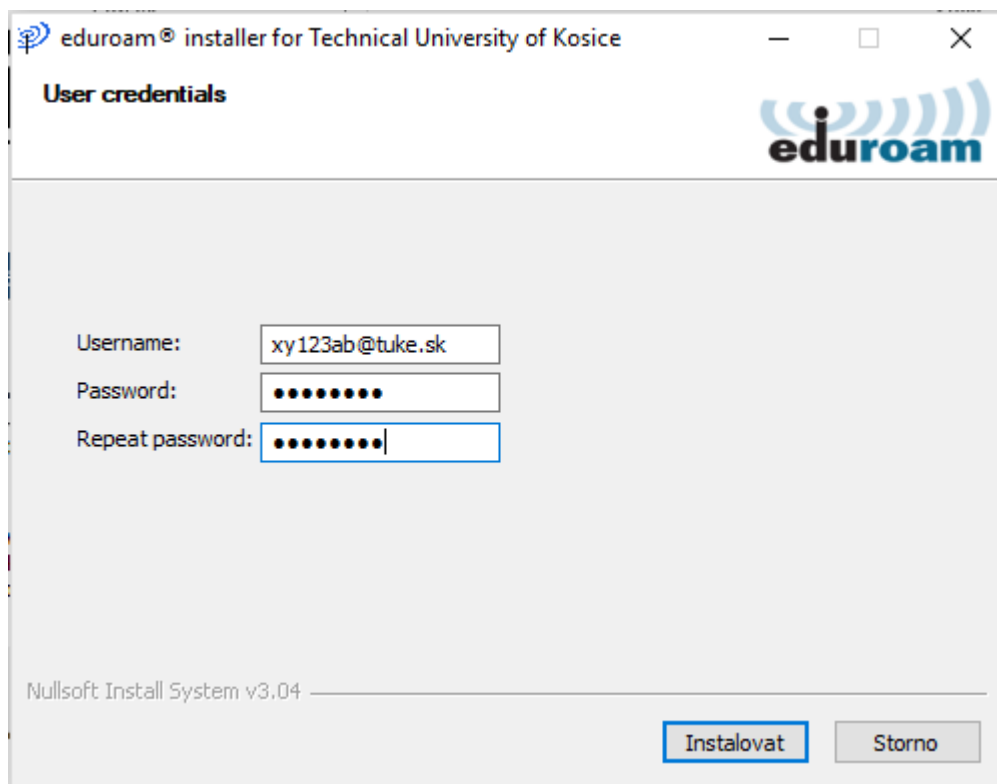
The screenshot shows the "eduroam® installer for Technical University of Kosice" window. The title bar includes the eduroam logo and the text "eduroam® installer for Technical University of Kosice". The main content area features the eduroam logo and the TUKE logo. The text reads: "Welcome to the eduroam® installer", "This installer has been prepared for Technical University of Kosice.", "The installer will create the following wireless profiles: eduroam, eduroam® via Passpoint.", "More information and comments: EMAIL: wifi@helpdesk.tuke.sk WWW: <http://uv.tuke.sk/wps/portal/uv/sluzby/bezdrotove-siete-wifi->". At the bottom, it states "Installer created with software from the GEANT project." A URL bar at the bottom left shows <https://cat.eduroam.org>. At the bottom right, there are two buttons: "Další >" and "Storno".



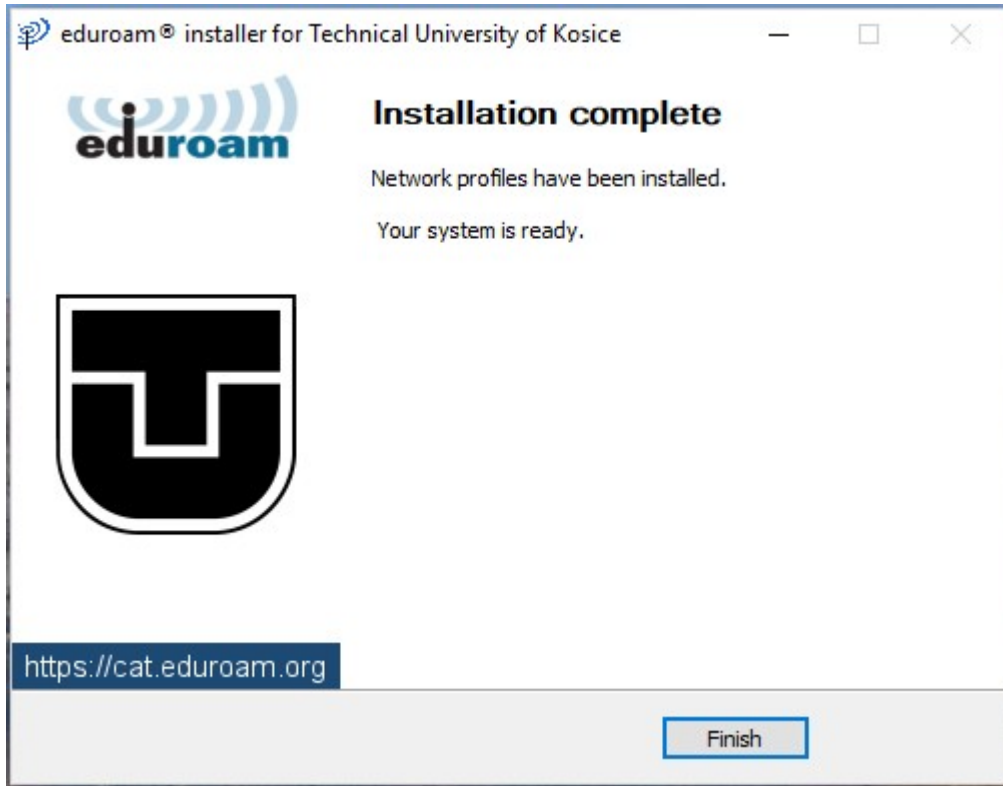
4. Enter your eduroam login data; unique login in the form **xy123ab@tuke.sk**

and the WiFi password that you previously set on the page:

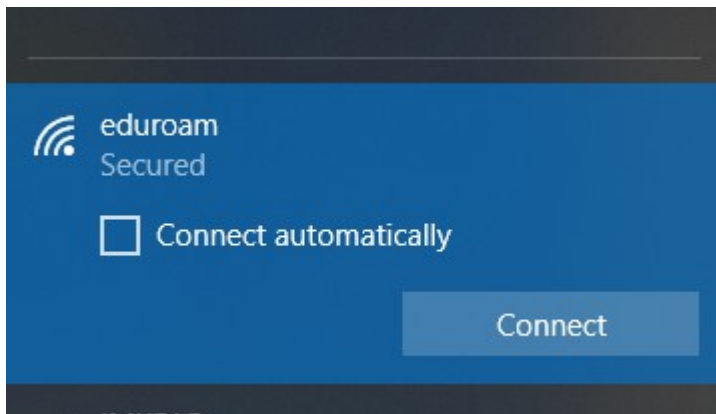
<https://uvt.tuke.sk/wps/portal/uv/sluzby/bezdrotove-siete-wifi-na-tuke/nastavenie-hesla-pre-wifi-pristup>



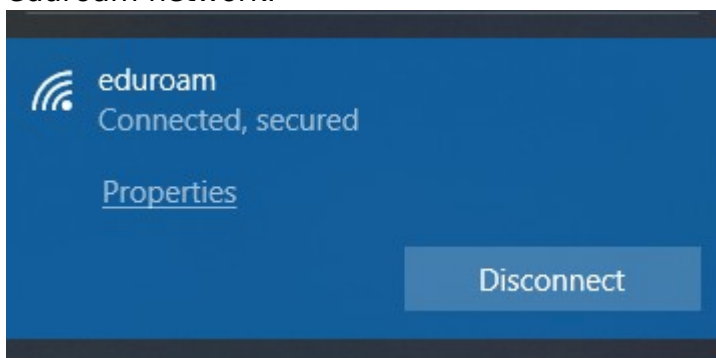
5. Finish the installation.



6. In the taskbar select network connections and connect to eduroam.



After successful installation and correct entry of login data, you are connected to the eduroam network.



You can check the network parameters of the connection by clicking Properties.

Properties

SSID:	eduroam
Protocol:	802.11n
Security type:	WPA2-Enterprise
Type of sign-in info:	Microsoft: Protected EAP (PEAP)
Network band:	2.4 GHz
Network channel:	11
IPv4 address:	147.232.159.202
IPv4 DNS servers:	147.232.3.2 147.232.16.16 193.87.100.12
Primary DNS suffix:	tuke.sk